

UPCOMING SHOW

Up to 15 works on show
June 4-July 18, 2009
Kathryn Markel Fine Arts
529 W. 20th Street, 6W
New York, NY 10011
(212) 366-5368

• SHOW LOCATION NEW YORK, NY

PETER HOFFER

Mythology of the landscape

Peter Hoffer's latest works will be a slight departure from his last series exhibited at Kathryn Markel Fine Arts in New York. This new body of work still involves the landscape as narrative, but has taken on new, more theatrical quality.

Many of the previous works were composed with various subjects found within the view of a panorama, or distant horizon. Trees, shrubs, grasses, hills, all take on characteristics that when composed tell a story, says Hoffer.

Inspiration for my next group of paintings takes on these similar ideas, however they now are closer related to a theatrical setting.

To achieve this level of dramatic composition, Hoffer has been researching classical backdrops, stage sets, and historic gardens.

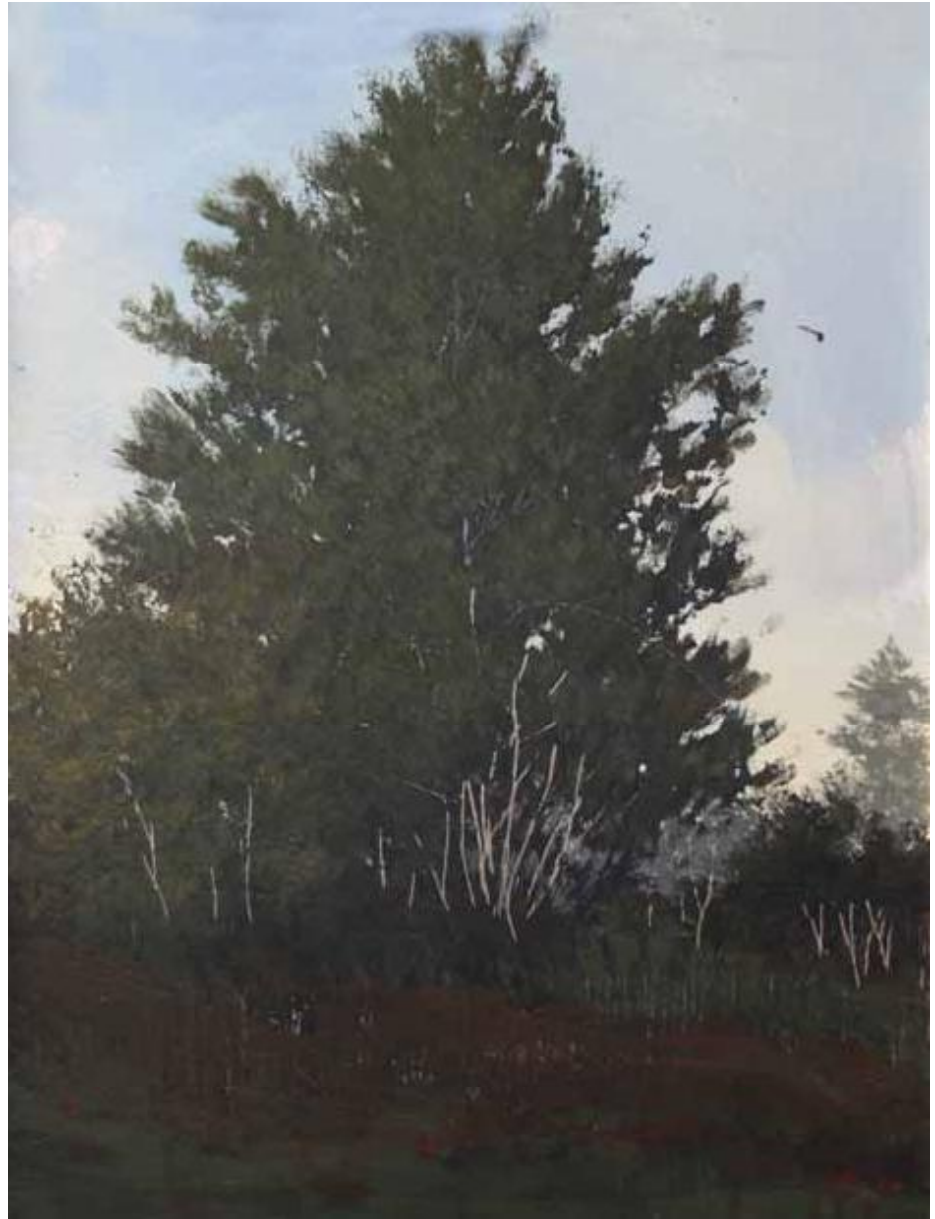
These paintings still embody those elements found within a composed setting, though now, the subject, that being a tree or hill, is now predominant and defined. The tree now takes up most of the picture plane and is presented as the actor, says Hoffer.

Hoffer says the mythology of the landscape is now emphasized in these works, and their titles hint to the paintings personification.

Named after an actual place or person from antiquity to the present, these subjects now possess a dignity parallel to the individual or place of reference, says Hoffer. Before, I alluded to the landscape as being anywhere it now shifts to being somewhere. Where the tree itself was only peripheral in the composition, it is now distinguished and particular.

Hoffer hopes the banality and innocence present in this landscape series entices the viewer to find a greater depth in unexpected places.

The notion of the ordinary and



Jardin, oil, acrylic and resin on panel, 20 x 16

the commonplace is inherent within this body of work the locations I select to paint are in fact peripheral and less than spectacular, says Hoffer. These works attempt to persuade or seduce the

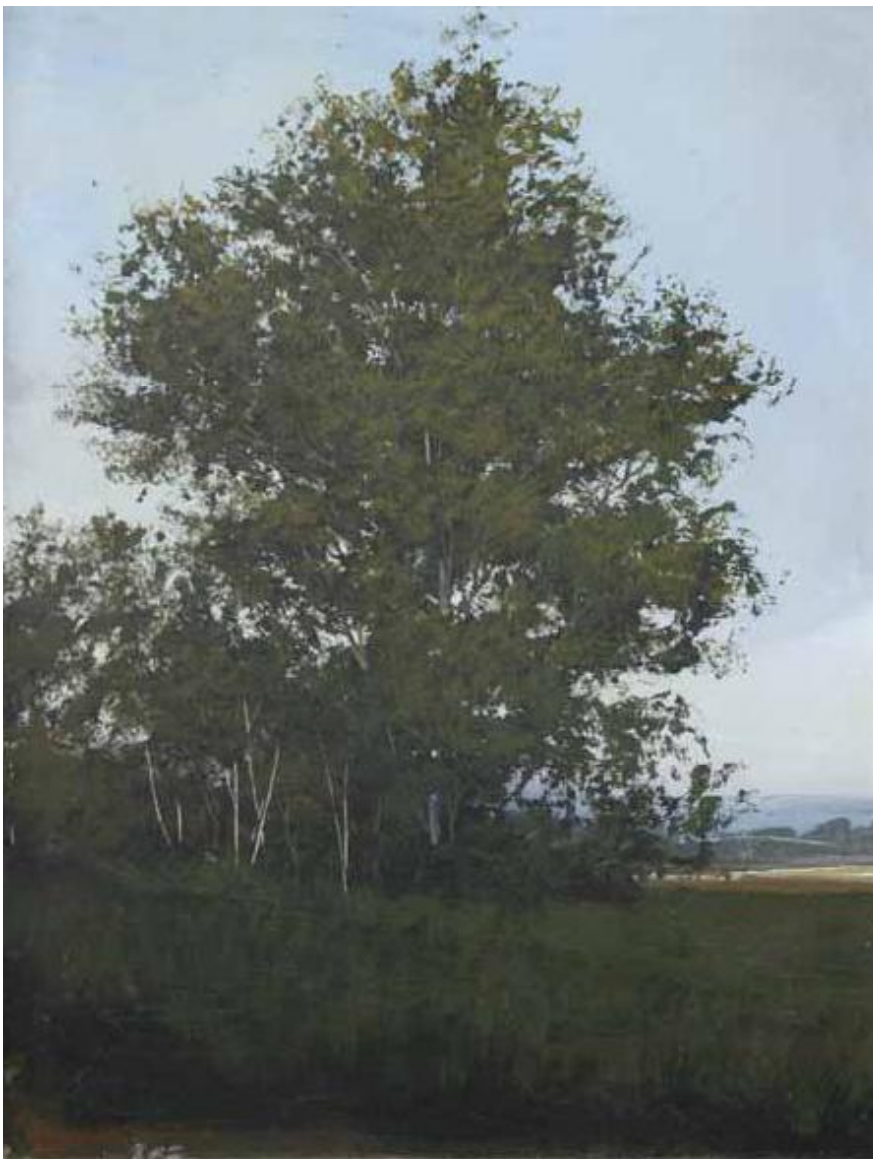
viewer to look into a horizon, or a cluster of trees, and see a story unfold. •

For a direct link to the exhibiting gallery go to

www.americanartcollector.com



Mosaic, oil, acrylic and resin on panel, 24 x 48



The Gallery Says . . .

•It is a privilege to be working with a painter whose work continues to be so visually and intellectually stimulating. The richness of Hoffer's palette, whether it is dark and moody or bright and placid, always maintains a certain aesthetic dignity in the path of the artist.

**Debra R. Marcoux, Director,
Kathryn Markel Fine Arts**

Hegel,
oil, acrylic and resin on panel, 24 x 12

Price Range Indicator

Our at-a-glance Price Range Indicator shows what you can expect to pay for this artist's work.

	Small	Medium	Large
2001	\$1,000	\$4,000	\$5,500
2009	\$2,200	\$6,000	\$8,500-\$14,000